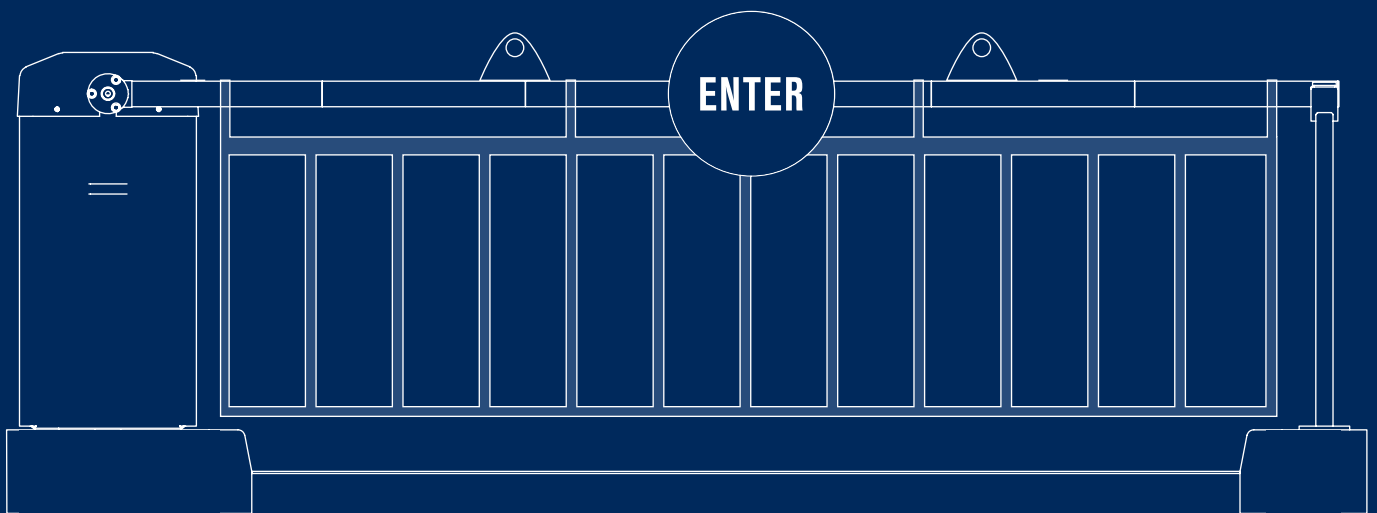


---

# ST3

## The Ultimate Automatic Rising Arm Barrier



### The All New ST3

- British designed & built
- British standard and CE compliant
- Tested to over 1 million operations
- Proven motor gearbox technology
- Steel construction

# ST3

## Automatic Rising Arm Barrier

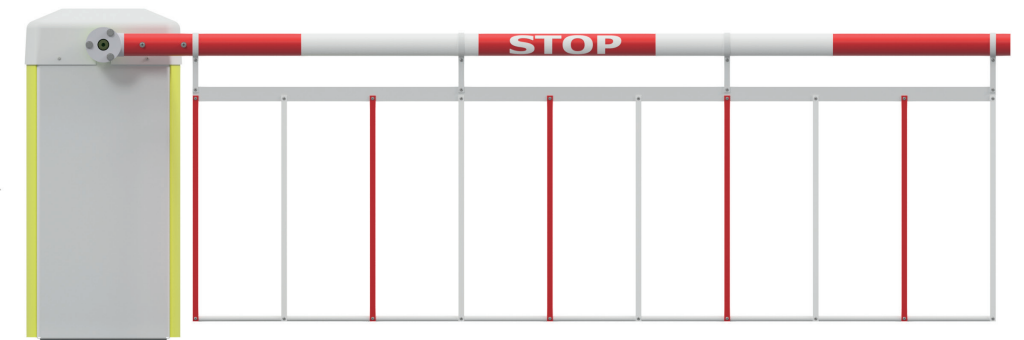
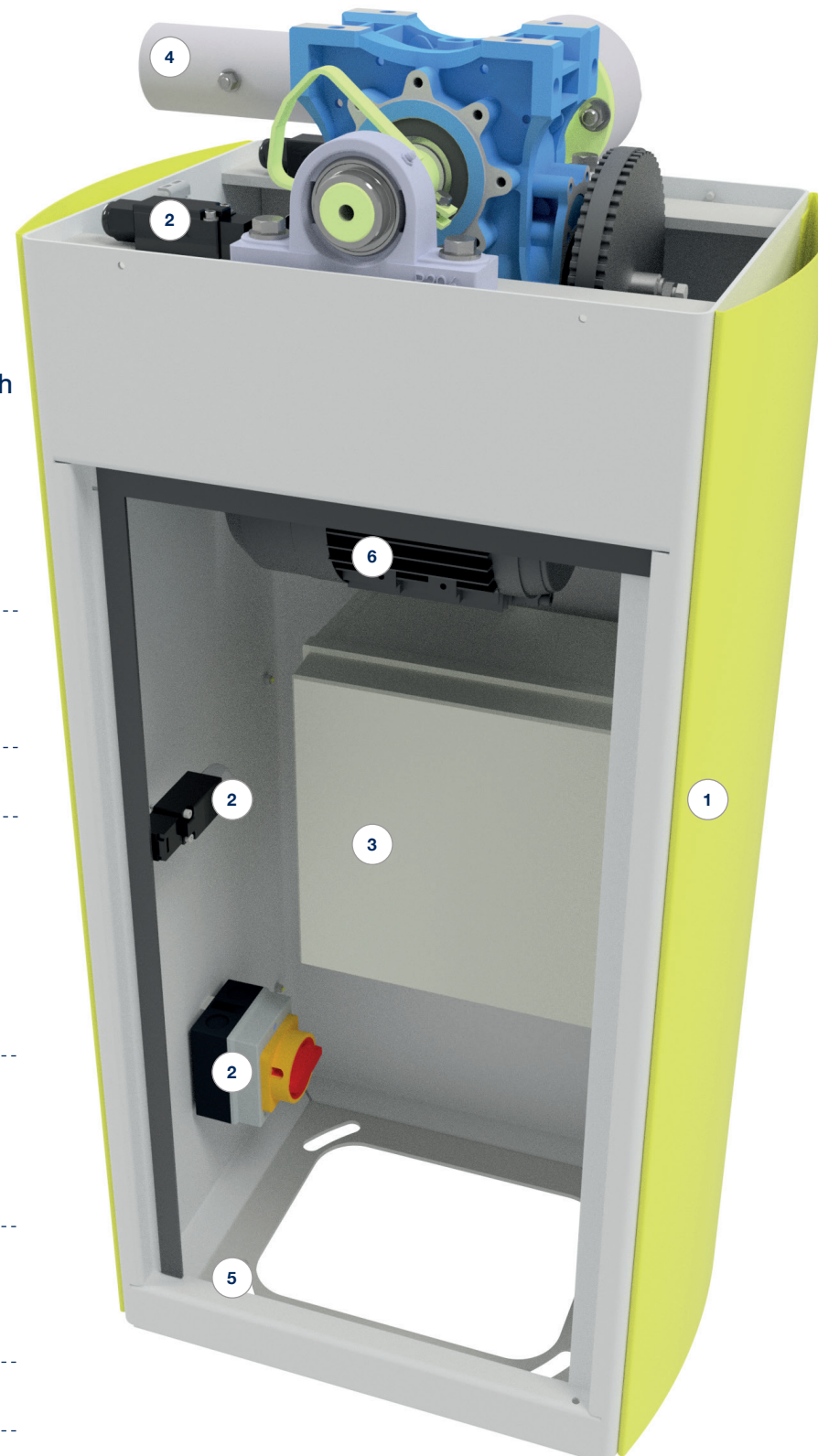
**NO matter what your vehicular traffic management needs, the new ST3 rising arm barrier is the perfect solution for road spans up to 6m wide.**

ST3 uses our proven motor/gearbox drive assembly and inverter technology providing both soft start and stop, along with rapid lift. This design allows for simple operational use and minimum service requirements. The ST3 has been designed and pre-wired for Bircher loop detectors as standard, and comes complete with two configurable powered output ports.

British designed and built, The ST3 barrier has been rigorously tested to over 1 million operations, is fully CE compliant and meets the latest British standard BS6751 PT4.

### Key Features

- 1 • Colour selectable side and door panels allow you to match your corporate colours - Full range of RAL colours available\*.
  - 2 standards colours (red & yellow)
- 2 • Triple safety cut-off, front door, lid and mains isolator
- 3 • Inverter drive
  - Integrated 24hr timer
  - Detachable control panel for ease of installation
  - Soft Start/Soft Stop Function
  - Designed and pre-wired for Bircher 2 loop detector
  - 2 configurable powered outputs
- 4 • Manual override in event of power failure
  - Left Hand or Right Hand pole option
  - Shearpoint arm assembly (Minimising damage in the event of a vehicle collision with the pole)
- 5 • Versatile fixing points
  - Lockable front door access
  - Large cable access area
- 6 • Proven motor gearbox technology



### Selectable body colour panels

Match your companies' corporate colours, choosing any \*RAL colour.



\*Additional charges may apply subject to colour and quantity

### Technical Specification

<b>Construction</b>	Steel Frame/Powder Coated body Aluminium Boom (Vinyl wrapped)
<b>Span(s)</b>	Up to 6000mm (without Curtain) Up to 5000mm (with Half-Curtain)
<b>Power Requirements</b>	230v 1ph 50Hz
<b>Current Consumption</b>	2.5 amps
<b>Operational Movement</b>	90° (Horizontal to Vertical)
<b>Time of Operation</b>	5/6 seconds
<b>Handing</b>	R.H. or L.H.
<b>Manual Operation</b>	Included
<b>Weight</b>	120 kg (Excluding pole attachments)
<b>Dimensions</b>	1125 x 525 x 385mm (Max)
<b>IP Rating</b>	IP54
<b>Accessories Included</b>	Fixing Bolts, Adhesive Stop or No Entry signs
<b>Noise Level</b>	Less than 70 dB.
<b>Warranty</b>	12 Month warranty as standard

## Diagram Key

- 1 Barrier Cabinet
- 2 Boom (pole)
- 3 Optional Signs
- 4 Optional Tip Support
- 5 Tip Support Foundation
- 6 Barrier Foundation

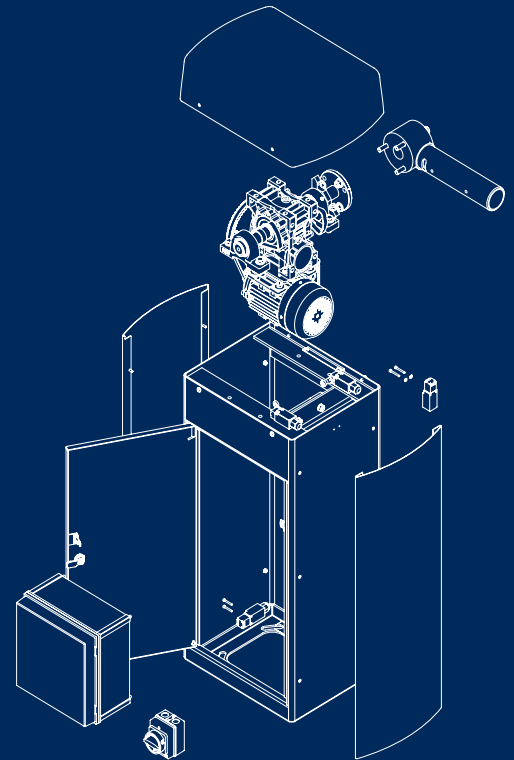
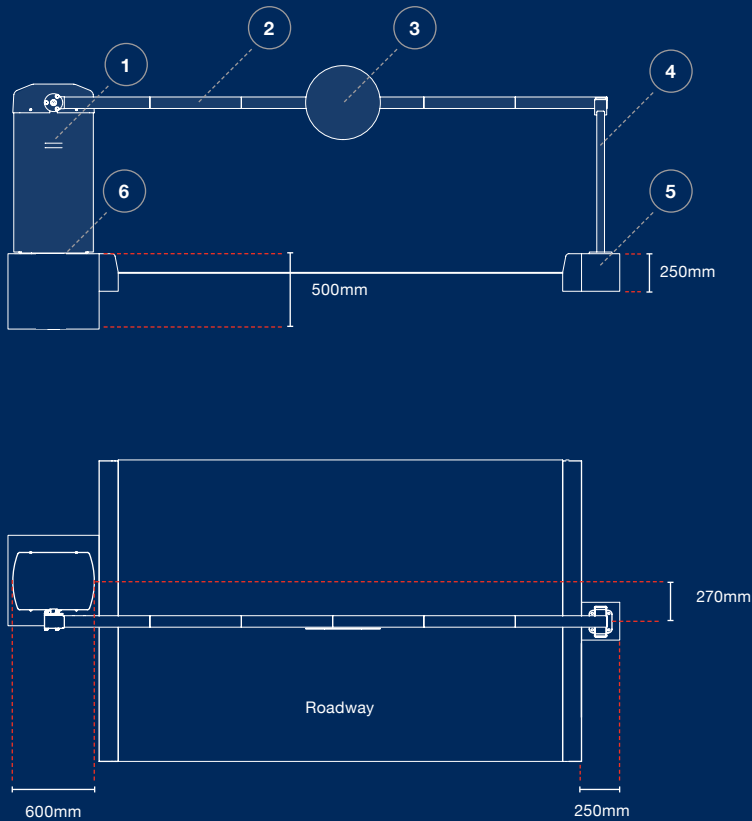
## Electrical Specification

<b>Voltage (V):</b>	230
<b>Frequency (Hz):</b>	50
<b>Load Current (A):</b>	6
<b>Rating (Kw):</b>	0.37
<b>Duty Rating:</b>	100%

## Foundations

Concrete to be cast a minimum of 7 days before installation of equipment.

Foundations should be smooth, flat and level with each other  
**(Grade C32/40 - 20mm Gravel)**



## Construction

- British designed & built
- British standard & CE compliant
- Tested to over 1 million operations
- Motor gearbox technology
- Steel construction
- No springs - To snap
- No hydraulics - To leak

## Control Variations

- Push buttons
- Induction loops
- Card reader
- Key-switch
- Coded keypad
- Photo Cells
- Radio control

## Optional Accessories

- Collapsible curtain
- Boom lights
- Plain "Stop" discs
- Basic or lockable tip support
- Articulated Arm
- Pogo tip support
- Traffic lights

**Titan Works**  
Bridge Way,  
Chesterfield  
S41 9QJ

T: +44 (0) 1246 260062  
E: sales@weightroncb.co.uk  
W: www.weightron.com

